

# Statement Of Qualifications



# OUR MISSION

Access Surveyors has always adhered to the “Measure twice, cut once” methods. It’s far more economical to take the time and do it right the first time. By our entire staff having this train of thought, it ensures deadlines are met and projects stay within budget.

In March of 1999, Mitch Brackin opened Access Surveyors and was dedicated to finding success in the surveying industry. We started with just a handful of employees and have continually expanded in the field as well as in the office. Access Surveyors began surveying residential and commercial property and has adapted to the Industrial Survey market to meet our clients many needs.

*The success of any company requires the respect of its clients and industry peers. The services that Access Surveyors offer to the industries throughout Texas and across the globe, have the valuable quality respect is formulated from. - Mitch Brackin*

Access Surveyors realize that when clients are satisfied, they will continue to use our services. We believe in well-coordinated exchanges of information, realistic time frames, meeting agreed-upon deadlines, and constant communication regarding the status of projects.





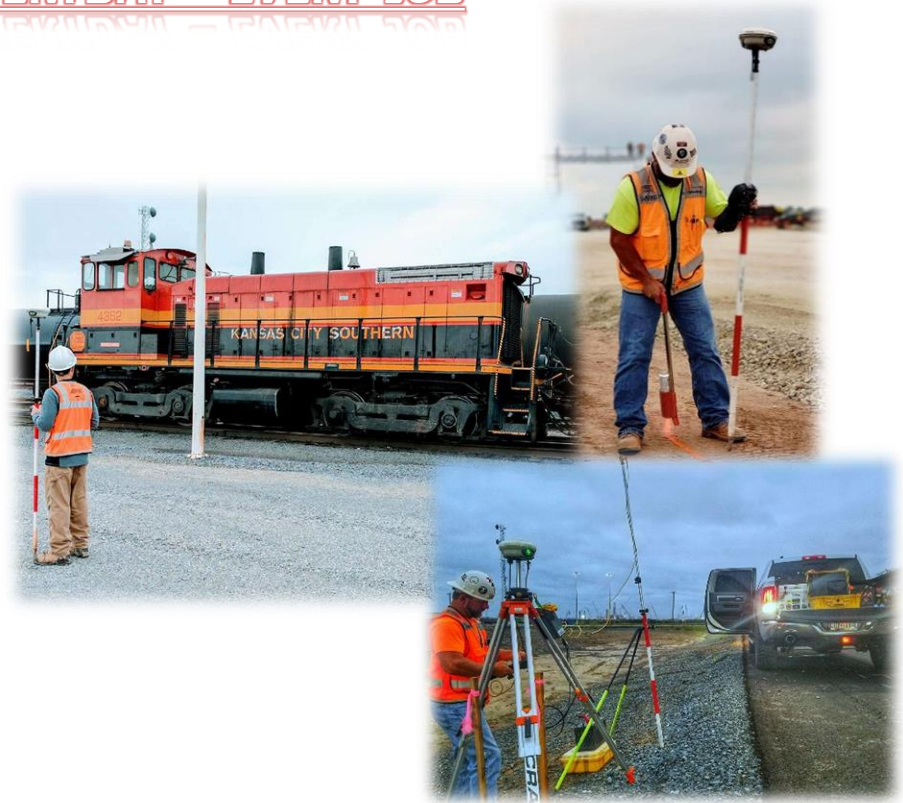
# SAFETY

OUR #1 PRIORITY, EVERYDAY – EVERY JOB

**ZERO Recordables**

**ZERO Lost Time**

**ZERO Near Misses**



# KEY STAFF



*Mitch Brackin, Owner/RPLS  
Over 40 Years Experience*



*Scott Brackin, RPLS  
18 Years Experience*



*Clint Rawlings, Sr. Project Manager  
28 Years Experience*



*Colby Brackin, SIT, CFM  
12 Years Experience*

# SURVEYING SERVICES

- Residential/Title Surveys
- Elevation Certificates
- Construction Staking
- Rail Staking and Verification
- Vessel Plumbness Surveys
- Machine Control Surveying
- Equipment QC Verification
- Hydrographic & Bathymetric Surveys
- Pile Staking
- Foundation Layout
- Pre-pour Verification
- Anchor Bolt Layout & Verification
- Aerial / Mobile / Terrestrial Scanning
- Bathymetric Scanning
- Topographic Surveying & Mapping
- Optical Tooling
- Precision Alignment & Verification
- Rotating Equipment Placement
- Piping Tie-ins and As-builts
- Oil Well Locations
- Aerial Control Surveys
- Structural Layout and Plumbness
- Bridge and Road Layout
- Hydro-Settlement Surveys





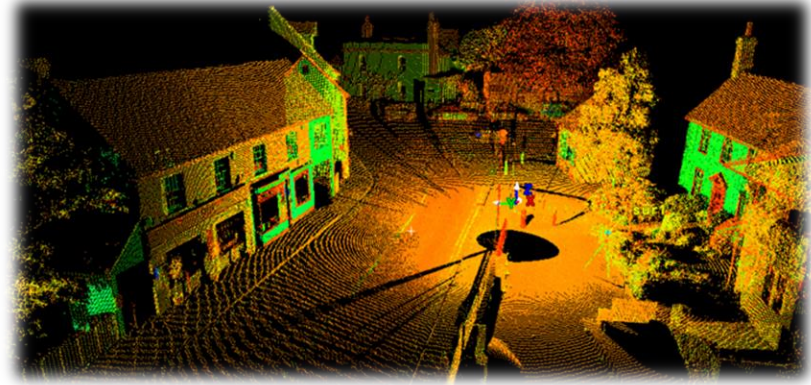
# LiDAR & Photogrammetry Services

LIDAR is a unique remote sensing technology that has taken the surveying industry by storm. The acronym “LIDAR” stands for Light Detection and Ranging and describes how the technology uses light in the form of lasers to measure distances. Take-Off Professionals’ data specialists can compile the data collected by a LIDAR system and use it to create exceptionally precise three-dimensional information about a specific area and its characteristics. LIDAR is an ideal system for a variety of industries, including the civil engineering, roadwork and mining industries.

## Advantages of LiDAR

- **Safety:** LIDAR systems work relatively quickly and can be operated from a distance, making them a good choice for locations that may be unsafe for human operators.
- **Speed:** LIDAR can collect a million points of data per second making it an exceptionally fast method of surveying.
- **Accuracy:** LIDAR systems collect extremely dense data with very little room between points. This means that the results are highly accurate.
- **Flexibility:** LIDAR systems can be mounted on a variety of platforms such as stationary tripod, company vehicles, airplanes, helicopters or drones.

Whether you need a topographic survey of a wooded tract of land, a 3D map of the inside of a large structure or high-resolution aerial photos, our LiDAR and Photogrammetry department has the up-to-date capabilities and knowledge to get you exactly what you need. Email [colby@access-surveyors.com](mailto:colby@access-surveyors.com) for assistance.





# MILESTONE PROJECTS





# **SAMSUNG AUSTIN SEMICONDUCTOR CHIP PLANT TAYLOR, TEXAS**

**\$24 BILLION ONGOING PROJECT – EXPECTED 2024 COMPLETION**

Working directly under Austin Bridge & Road, our survey crews were the first boots on the ground in May of 2022 to establish project control. Ongoing work includes staking of:

- Storm Sewer
- Sanitary Sewer
- Drainage
- Culverts
- Electric
- Gas
- Water
- Grading
- Roads
- Piles
- Buildings
- As-built Reports
- Grading Reports
- Volume Calculations





# Bois d'Arc Lake Reservoir, Fannin County, Texas

**\$1.6 BILLION PROJECT – 2018-2022**

Subcontracted with Austin Bridge & Road, our survey crews established control points and provided as-built information to ensure the project was built to design specifications. We provided numerous contractors with the following:

- Right-of-Way / Clearing Limits Staking
- Benchmarks
- Boat Ramp(s) Layout
- Boat House Layout
- Pavement Striping Layout
- Drilled Shaft Verification
- Bridge Layout
- Layout for the Operations Center Building
- 1.3-mile-long Bridge for the FM 897 Roadway
- ±11 miles of county roadway

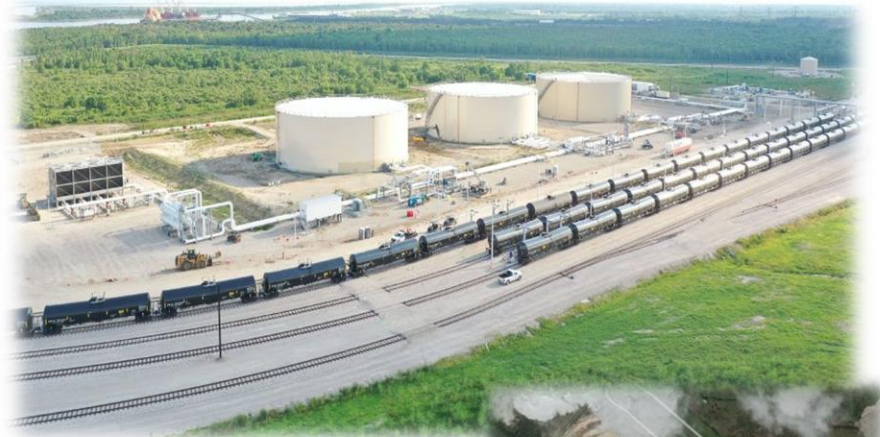


# PORT ARTHUR CRUDE TERMINAL

**\$130 MILLION PROJECT – Completed 2021**

\$130 million project brought more than 1,200 direct and indirect construction jobs to Port Arthur and Jefferson County, as well as more than 40 full-time jobs once operations commenced at the facility. Access Surveyors, LLC served as “Lead Survey” for this project working directly under Ragnar Benson.

- Grade Staking and Verification for all Earthworks.
- Battery Limit Staking for Clearing and Grubbing.
- Site-wide Topographic Work for Quantity Calculations and Model Improvement.
- Maintaining and Setting Horizontal and Vertical Control.
- Pile Layout and Template Verification.
- Road and Bridge Layout.
- Tank Layout.
- Anchor Bolt Layout and Verification.
- Electrical Route Crossings.
- Staking of all utilities.
- Staking and As-builts for Sub-ballasts Site Wide.
- Strip and Lift Topo and Calculations.
- Track Layout and Verification.
- Underdrain Layout and As-builts.
- Pull-box Layout and As-builts.
- All Piping Related Efforts Including Drainage.
- 3<sup>rd</sup> Party Verification of all Subcontractor Work Site-Wide.
- As-builts for all Turnover Documents.





# Union Pacific Hump Yard, Hearne, Texas

## LARGEST UNION PACIFIC PROJECT IN THE RAILROAD'S 155-YEAR HISTORY

- Grade Staking and Verification for all Earthworks.
- Battery Limit Staking for Clearing and Grubbing.
- Site-wide Topographic Work for Quantity Calculations and Model Improvement.
- Maintaining and Setting Horizontal and Vertical Control.
- Pile Layout and Template Verification.
- Road and Bridge Layout.
- Anchor Bolt Layout and Verification.
- Effluent Channel Staking.
- Electrical Route Crossings.
- Staking of all utilities.
- Staking and As-builts for Sub-ballasts Site Wide.
- Strip and Lift Topo and Calculations.
- Track Layout and Verification.
- Settlement Plate Verification.
- Underdrain Layout and As-builts.
- Pullbox Layout and As-builts.
- All Piping Related Efforts Including Drainage.
- Bridge Risers Verification.
- 3<sup>rd</sup> Party Verification of all Subcontractor Work Site-Wide.
- As-builts for all Turnover Documents.



# **LARGEST WORLD-CLASS PROJECT IN IOWA HISTORY**

**± 3 Billion Dollar Project – 2014 - 2017**

- ±25 Multi-level Pipe Racks, sleeper racks and countless pipe Supports.
- Installation of nearly 5,000 anchor bolts.
- Ammonia, Desulfurization, Purification and Compressor Units.
- 20,000+ yards of concrete involving footers, platforms and foundation.
- Two (2) Cooling Towers Two (2) Chemical Injection Units.
- Demineralization Unit.
- Two (2) Steam Generation Boilers.
- Complete Water Treatment Facility.
- Urea Granulation, Urea Synthesis and Nitric Acid Units.
- Final Equipment sets for: Diesel Generators, Power Generators, Steam Turbines, etc.
- Vent and Flare Unit coupled with a Natural Gas Letdown.
- Unit Four (4) Enclosed Electrical Substations.





# CIRCUIT OF THE AMERICAS

## FIRST OPEN WHEEL RACETRACK IN NORTH AMERICA AUSTIN, TEXAS

### Site Quantities:

- $\pm 400,000$  tons of flex base and asphalt poured on the 1,000+ acre site.

### Racetrack Quantities:

- 50,000+ tons of flex base.
- 18,000+ tons of asphalt laid for binding.
- 90,000+ tons of asphalt for mid-layering.
- 22,000+ tons of asphalt for final, smooth finish racing surface..

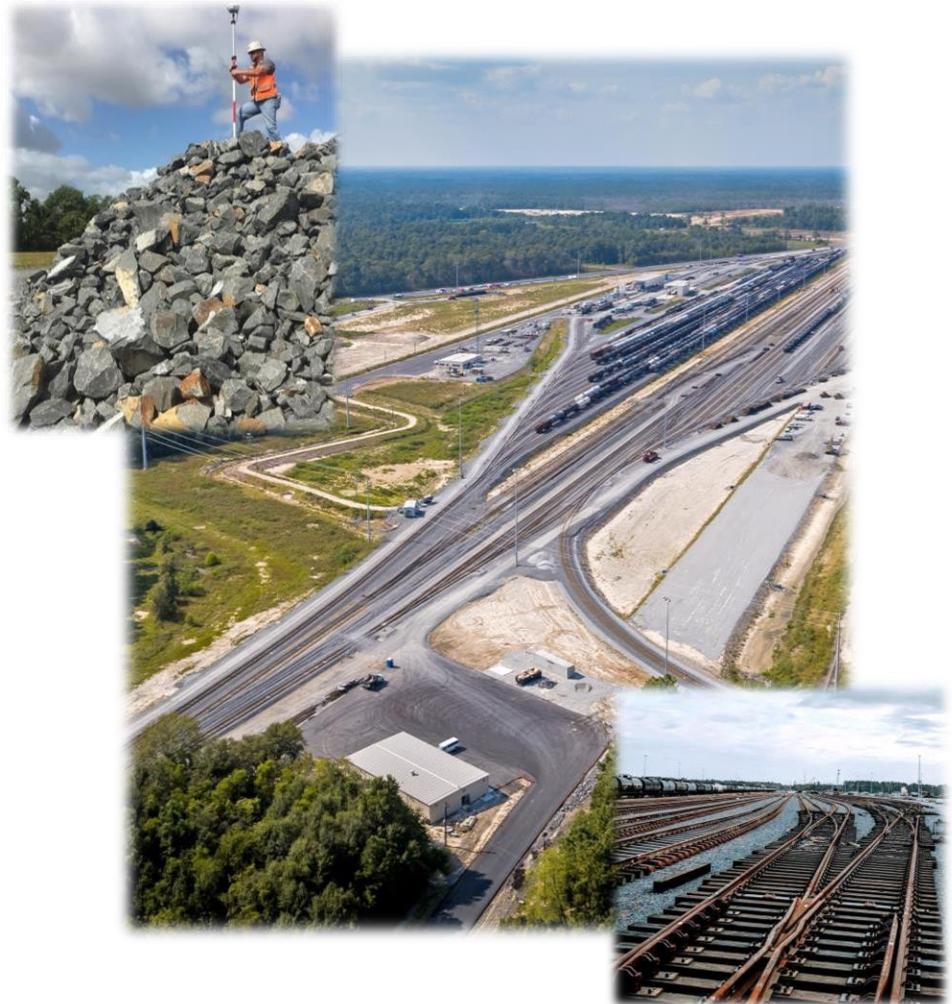
Tolerances for the final surface were set to not exceed 1/8 of an inch.



# **MOSSVILLE YARD EXPANSION PROJECT RAIL FACILITY**

## **JOINING SASOL'S WORLD-SCALE PETROCHEMICAL COMPLEX IN MOSSVILLE, LOUISIANA**

- Grade Staking and Verification for all Earthworks.
- Battery Limit Staking for Clearing and Grubbing.
- Site-wide Topographic Work for Quantity Calculations and Model Improvement.
- Maintaining and Setting Horizontal and Vertical Control.
- Pile Layout and Template Verification.
- Road and Bridge Layout.
- Anchor Bolt Layout and Verification.
- Effluent Channel Staking.
- Electrical Route Crossings.
- Staking of all utilities.
- Staking and As-builts for Sub-ballasts Site Wide.
- Strip and Lift Topo and Calculations.
- Track Layout and Verification.
- Settlement Plate Verification.
- Underdrain Layout and As-builts.
- Pull-box Layout and As-builts.
- All Piping Related Efforts Including Drainage.
- Bridge Risers Verification.
- 3<sup>rd</sup> Party Verification of all Subcontractor Work Site-Wide.
- As-builts for all Turnover Documents.





# MOTIVA CRUDE EXPANSION

**COMPLETED AS THE LARGEST REFINERY IN NORTH AMERICA  
PORT ARTHUR, TEXAS**

We have assisted in the implementation and erection of: 60,000+ concrete and wood pile driven site-wide Construction and Monitoring of a 51 Monument Control System 27,000 tons of steel erected and plumbed for multilevel pipe racks 300+ Modules Delayed Coker Unit Vacuum Pipe Still H-Block consisting of a Hydrocracker Unit, Cat Feed Hydro Naptha Power Station Expansion Acid Recovery Unit 20+ Storage Tanks for Crude Oil, Diesel Fuel, Jet Fuel, ect. Cooling Towers Vent and Flare Units 69kv and 240kv substations Complete Raw Water and Water Treatment Unit Generators, pumps and rotating equipment set site-wide. Final Paving, Grading and Drainage systems. Complete electrical route to support the massive two-square milesite.



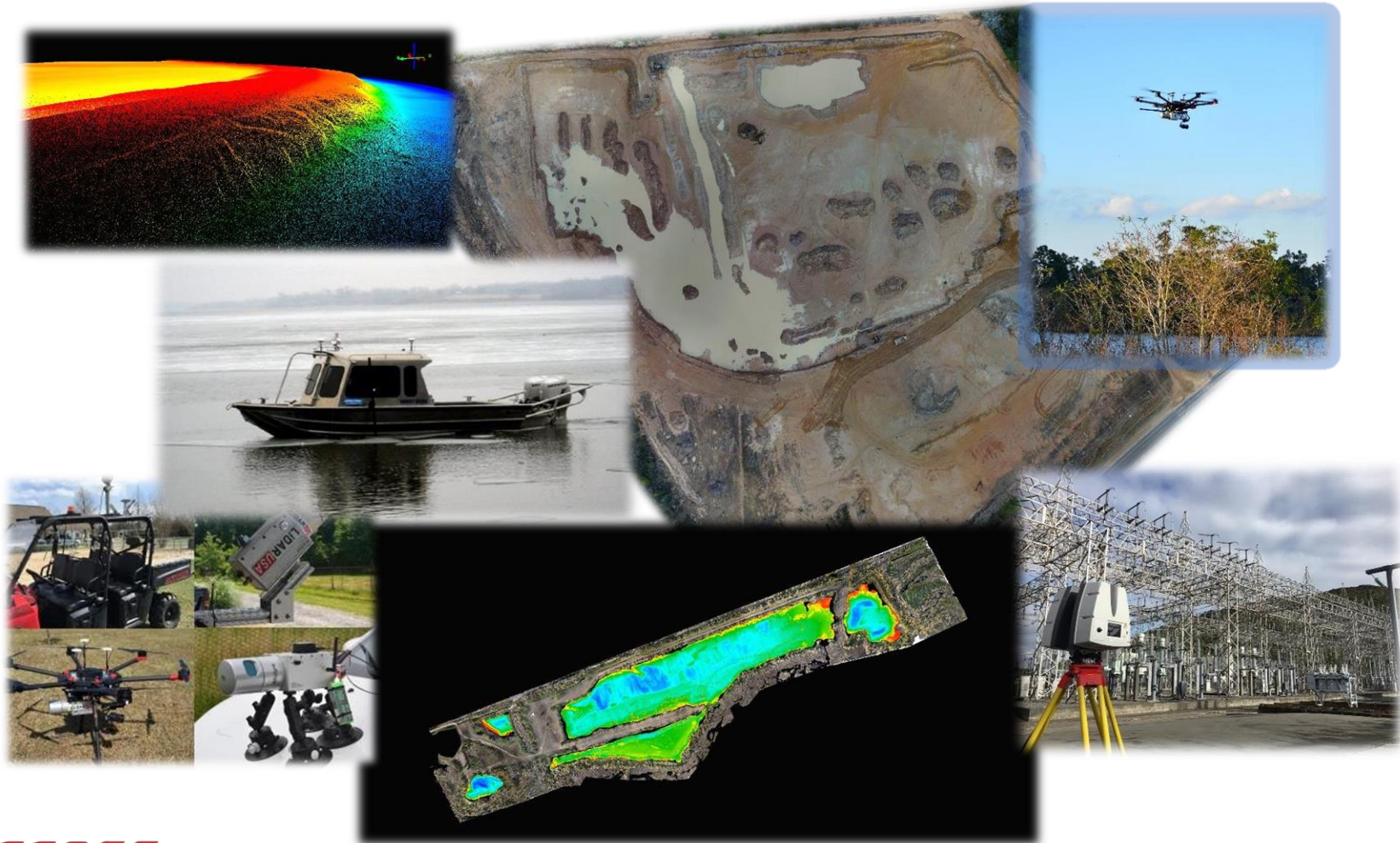




**Access**  
Surveyors



# ***AERIAL & MOBILE LiDAR, 3D TERRESTRIAL SCANNING, HYDROGRAPHIC/BATHYMETRIC***





# AERIAL IMAGING





